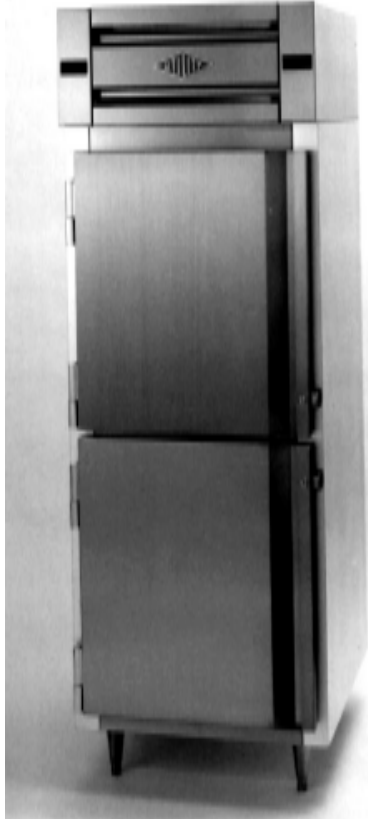


UTILITY REFRIGERATOR

ONE SECTION REACH-IN DUAL TEMP



MODEL RF-30-SS-2S-D
SHOWN WITH OPTIONAL HINGING
(DOOR HINGED LEFT)

MODEL NO.	DESCRIPTION
<input type="checkbox"/> RF-25-SS-2S-D	25" Wide, S/S Exterior & Interior
<input type="checkbox"/> RF-25-SA-2S-D	25" Wide, S/S Exterior, Aluminum Interior
<input type="checkbox"/> RF-25-AA-2S-D	25" Wide, S/S Front, Alum. Sides & Interior
<input type="checkbox"/> RF-30-SS-2S-D	30" Wide, S/S Exterior & Interior
<input type="checkbox"/> RF-30-SA-2S-D	30" Wide, S/S Exterior, Aluminum Interior
<input type="checkbox"/> RF-30-AA-2S-D	30" Wide, S/S Front, Alum. Sides & Interior

OPTIONS	MODEL NO. MODIFICATION
<input type="checkbox"/> Remote	Add suffix "X" to model number
<input type="checkbox"/> Glass Doors	Change "2S" to "2G"
<input type="checkbox"/> Pass-Thru	Add prefix "PT" to model number
<input type="checkbox"/> Narrow Depth	Change "D" to "N" (remote only)

STANDARD FEATURES

- Stainless steel front, door and top-mount
- Self-closing door hinges with stay-open feature at 120 degrees (std. door hinging is on right; other configurations available)
- Full-length, one piece recessed Unigrip™ handle (solid doors only)
- Heavy-duty, built-in security cylinder door locks on solid doors
- Automatic interior light (switch concealed in door hinge)
- Four adjustable chrome plated wire shelves per full door opening
- Stainless steel shelf clips and shelf standards
- Adjustable 6" heavy-duty legs or 6" casters in lieu of legs
- Condensate heaters around door opening
- Snap-in magnetic door gaskets
- Expansion valve refrigeration system
- Top-mounted compressor
- Dual digital thermometers
- R-404a refrigerant for superior temperature recovery and pulldown
- Condensate evaporator
- Impact-resistant PVC breaker strip
- 10 foot electrical cord with 3-prong grounded plug
- Master power switch
- Automatic defrost (defrost timer optional on remote models)
- 5 year compressor, 3 year parts, 1 year labor warranty

OPTIONS & ACCESSORIES

- Stainless steel back ___ and/or bottom ___ (specify either or both)
- Glass doors (non-heated)
- Heated glass doors
- Additional chrome wire shelves (specify quantity) _____
- Stainless steel wire shelves in lieu of chrome shelves
- Tray slides "L" Type ___ Universal ___ "R" Type ___ (specify quantity)
- Thermostat & solenoid (remote models)
- Stainless steel curb base (specify 4" or 6" high)
- Temperature alarm
- Defrost timer on remote models (shipped loose or installed)
- 6" front locking casters in lieu of legs (no charge)
- 6" seismic legs
- Correctional facilities package
- Water-cooled condensing unit
- 5" high top-mount (remote models)
- Custom modifications (please specify)



UTILITY REFRIGERATOR

Manufacturers of The Finest Quality Refrigeration Equipment
Since 1931

www.utilityrefrigerator.com

PROUDLY MADE IN THE USA

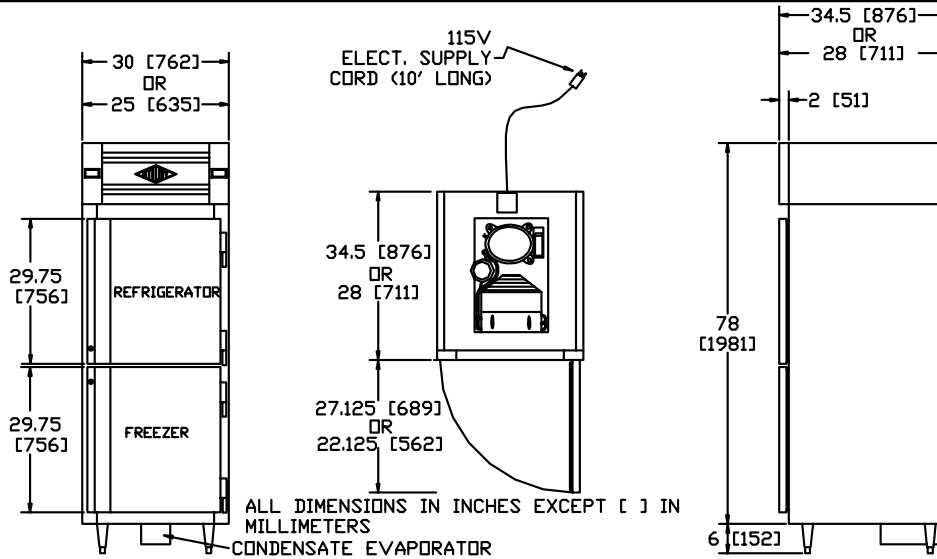




Project _____ Item# _____

UTILITY REFRIGERATOR

ONE SECTION REACH-IN DUAL TEMP



PRODUCT DATA (DATA IS FOR STD. MODELS; OPTIONS MAY CHANGE SPECIFICATIONS)	RF-25 Std. Depth	RF-25 Narrow Depth	RF-30 Std. Depth	RF-30 Narrow Depth
Width (overall)	25"	25"	30"	30"
Depth (overall)	34 1/2"	28"	34 1/2"	28"
Height (overall inc. legs)	84"	84"	84"	84"
Depth (door open 90 deg.)	61 5/8"	50 1/8"	61 5/8"	50 1/8"
Door opening (net width)	18 1/4"	18 1/4"	23 1/4"	23 1/4"
Door opening (net height)	26 3/4"	26 3/4"	26 3/4"	26 3/4"
Capacity (cu. ft.)	18.3	14.0	22.9	17.5
Number of shelves	4	4	4	4
Shelf area (sq. ft.)	12.9	9.7	16.3	12.3
Voltage (dedicated circuit required)	115	115	115	115
Amperage (self-contained)	14.8	N/A	14.9	N/A
Amperage (remote)	8.8	8.8	8.9	8.9
NEMA plug configuration	5-20 P	5-15 P	5-20 P	5-15 P
Horsepower (self-contained)	1/2	N/A	1/2	N/A
Ship weight (lbs.)	395	376	440	415
Ship volume (cu. ft.)	55	47	65	55
Crated dimensions (87" H)	28 1/2"W x 38 1/2"D	28 1/2"W x 32 1/2"D	33 1/2"W x 38 1/2"D	33 1/2"W x 32 1/2"D

SPECIFICATIONS

Cabinet Exterior - Exterior sides are constructed of heavy gauge stainless steel or aluminum. Exterior back and bottom are constructed of heavy gauge galvanized or optional stainless steel. Compressor housing and louver rails are stainless steel. Exterior digital thermometer. Cabinet is supported on heavy-duty, adjustable 6" legs. Cabinet body is 100% CFC free, foamed-in-place polyurethane insulation.

Cabinet Interior - All heavy gauge stainless steel or aluminum construction with radius corners. Automatic interior light with concealed actuator. Heavy-duty stainless steel shelf standards and shelf clips for superior durability and corrosion resistance. Two (2) chrome plated wire shelves per section. Door openings protected by impact-resistant PVC breaker strip.

Doors - All stainless steel construction with magnetic snap-in gasket. Door perimeters have built-in energy saving condensate heaters. In order to prevent damage to door during installation, doors are equipped with self-closing lift-off cam hinges for easy door removal. Doors stay open at 120 degrees for easy access to interior. Optional glass doors have two panes for maximum refrigeration efficiency. Optional heated glass prevents condensation in humid environments. Standard hinging is door hinged right (other configurations available, please specify.)

Refrigeration - Single top-mounted compressor with R-404a refrigerant for fast temperature pull-down and increased cooling capacity. Thermostatic expansion valves for superior performance and efficiency, faster temperature recovery, shorter running time and lower energy consumption. Electrical condensate evaporator. Automatic freezer defrost with fan delay to prevent hot air from being circulated in cabinet. Pressure control prevents compressor burnout in case of loss of refrigerant.

In line with its policy to continually improve its products, Utility Refrigerator reserves the right to change materials and specifications without notice.



UTILITY® IS PROUDLY MADE IN THE USA

RF25-GL



UTILITY REFRIGERATOR

Manufacturers of The Finest Quality Refrigeration Equipment Since 1931

10029 Bradley Ave. Pacoima, CA 91331

(818) 899-8300 Fax (818) 899-8335

www.utilityrefrigerator.com